

# THE CHICAGO LOOP'S NEW DEMOGRAPHY

REVIEWING CHANGE FROM 2010 - 2020

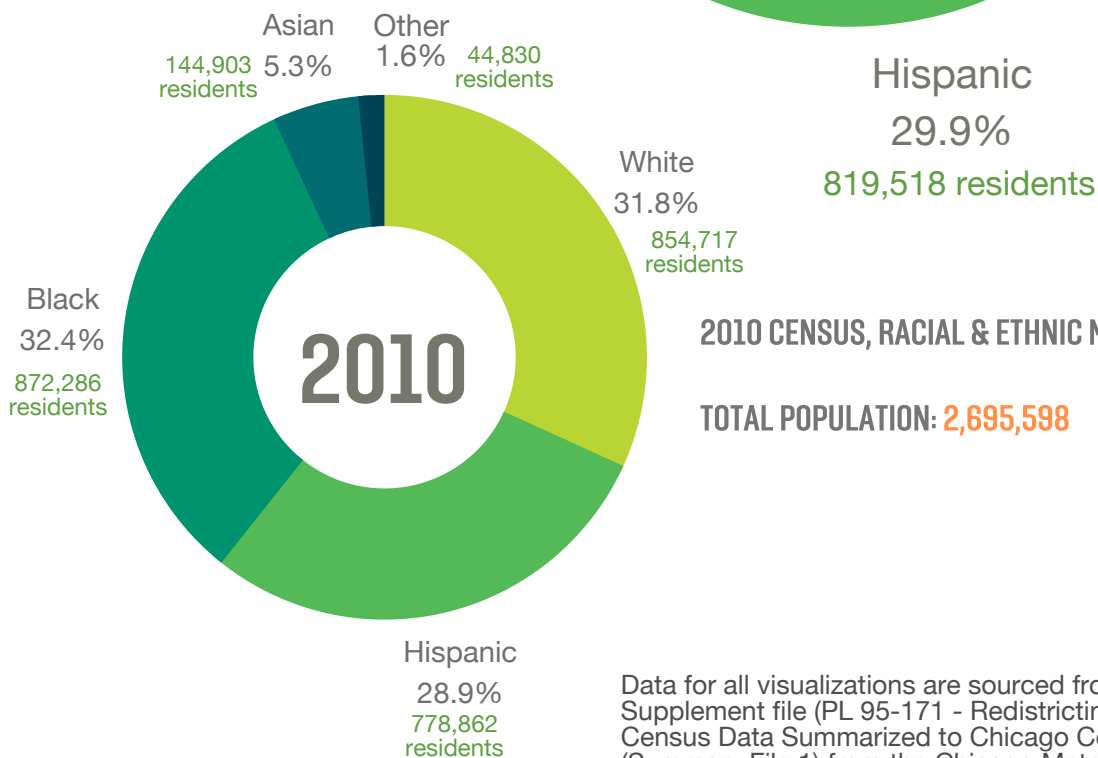
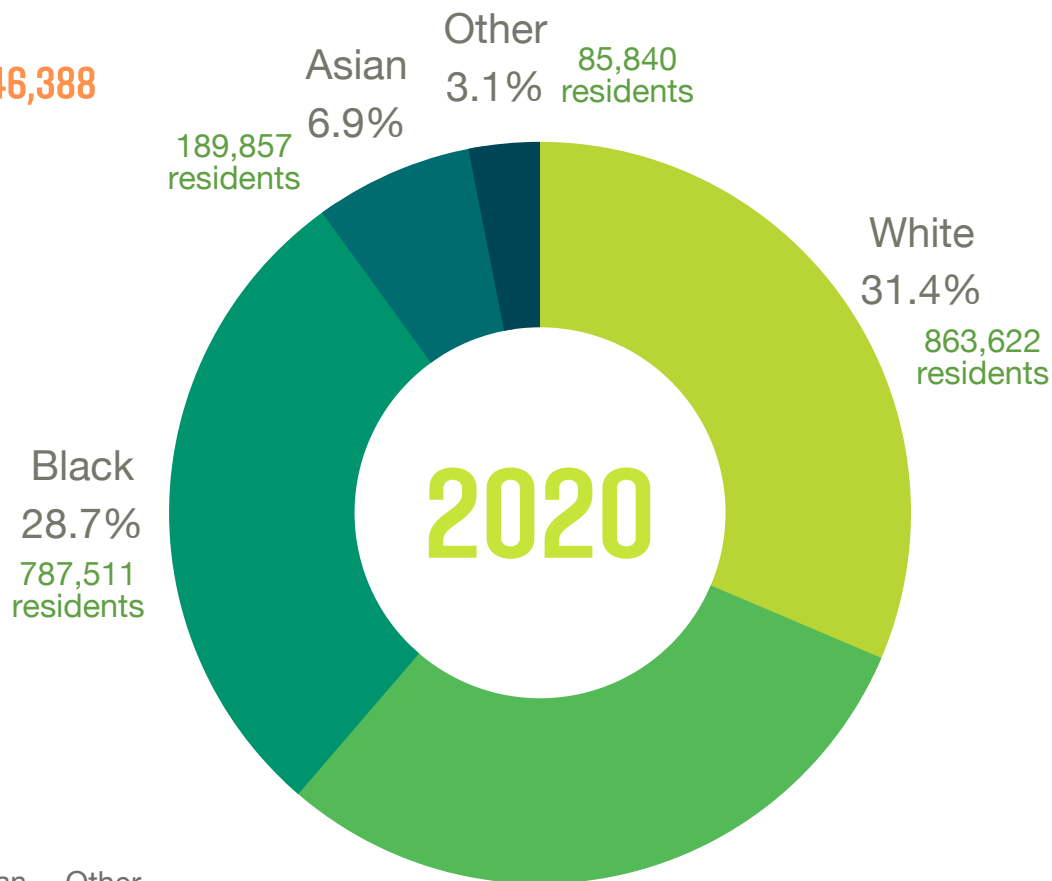


LEARN MORE AT  
[LOOPCHICAGO.COM](https://loopchicago.com)

# THE STATE OF CHICAGO

## 2020 CENSUS, RACIAL & ETHNIC MAKEUP

TOTAL POPULATION: **2,746,388**



## 2010 CENSUS, RACIAL & ETHNIC MAKEUP

TOTAL POPULATION: **2,695,598**

Data for all visualizations are sourced from the 2020 Census Supplement file (PL 95-171 - Redistricting) and the 2010 Census Data Summarized to Chicago Community Areas file (Summary File 1) from the Chicago Metropolitan Agency for Planning (CMAP). Racial and ethnic partitions are aggregate categories from Census groups prepared by CMAP. Census variables are summarized to Chicago's Community Areas.

# THE LOOP & DOWNTOWN



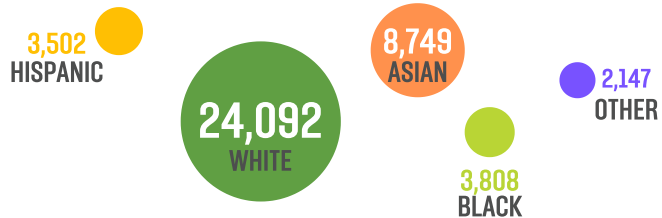
## HISTORIC CHANGES FROM 2010 - 2020

Since 2010, the Loop—defined in the Census data as the neighborhood between the Chicago River to the north and west, Lake Michigan to the east, and Roosevelt Road to the south—grew more than any other Community Area in Chicago. Its population increased by 44.45%—the only jurisdiction posting gains of over 40%, and outpacing its adjacent downtown neighborhoods. The Loop recorded its highest population ever, now standing at 42,298 residents.



The Loop also became more diverse; all racial and ethnic groups recorded population gains. Asian and Hispanic residents increased by 87.83% and 74.23%, respectively. Those identifying as an "Other" racial designation increased by 139.89%. White residents, currently the largest racial group in the Loop, grew by 31.23%. Black residents increased by 13.3%.

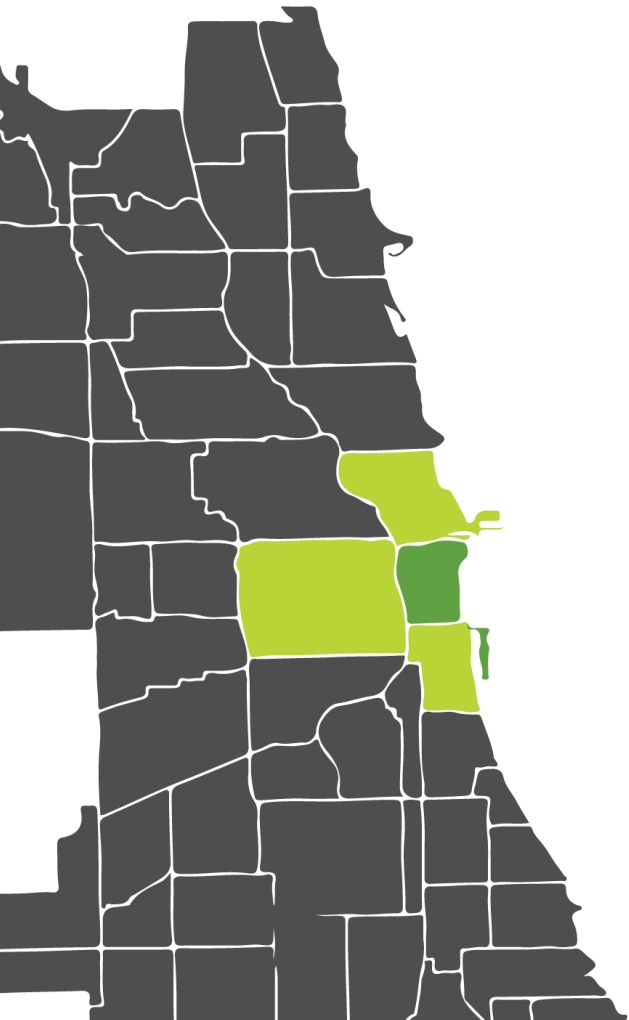
## LOOP POPULATION BY RACE/ETHNICITY - RAW FIGURES



## AMERICA'S FASTEST GROWING DOWNTOWN

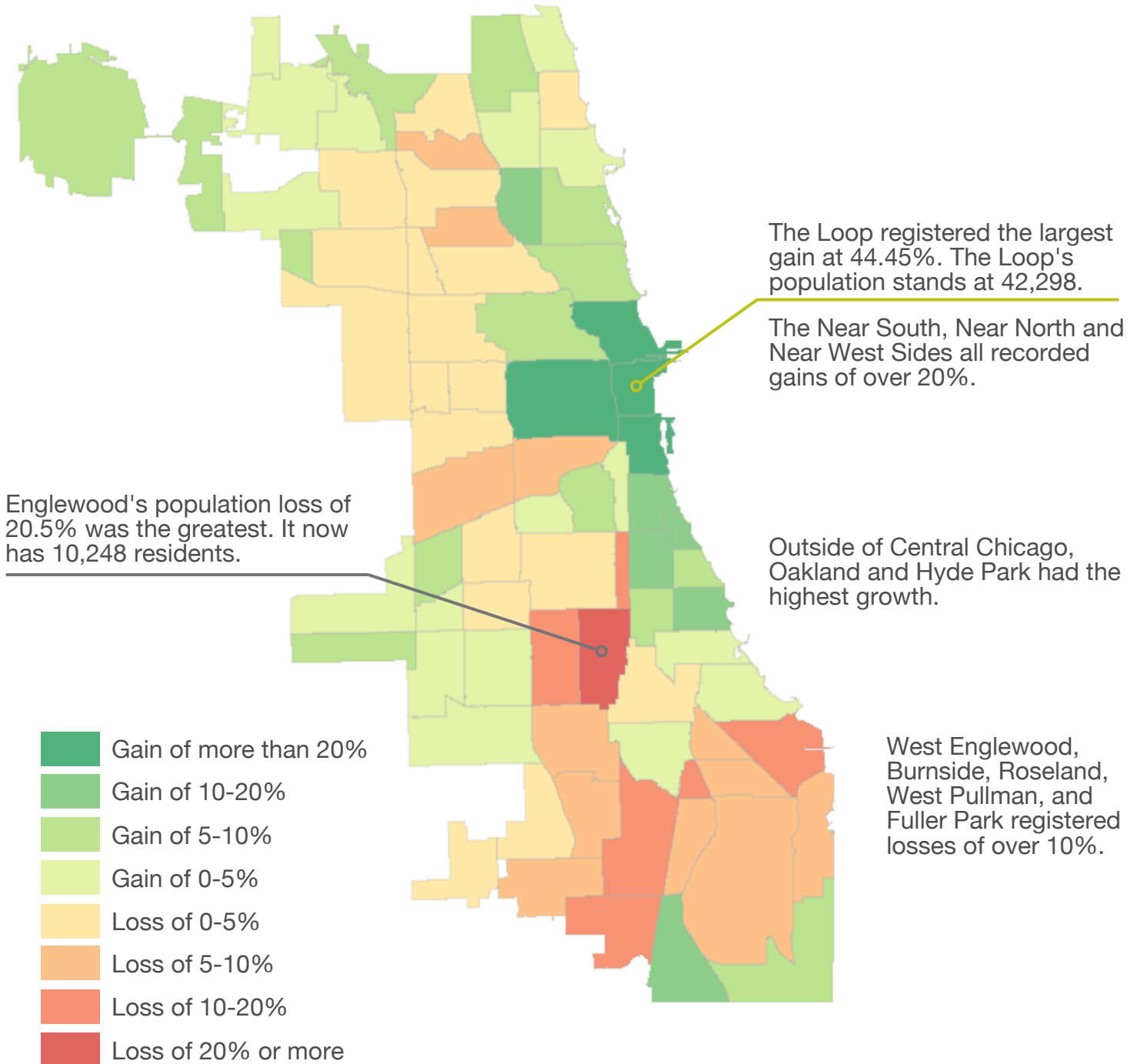
The Loop's adjacent Community Areas also recorded high growth. The Near North Side grew to 105,481 residents, overtaking Austin, Lake View, and West Town as Chicago's most populous jurisdiction. Developments in the Near South Side propelled the area to 34.62% growth, with rapidly increasing Hispanic and Asian communities. Similar increases in the Near West Side pushed the neighborhood into the top ten of the city's most populated.

Together, Chicago's Central Business District and Downtown are home to 244,455 residents, or 8.9% of the city's population within 4.6% of the city's total area. Over the past 30 years, Chicago's downtown has grown faster than any other American city.



# TOTAL POPULATION

Between 2010 and 2020, Chicago's population increased 1.9% to 2,746,388, but not all areas experienced growth. Central Chicago grew the most, while much of the Far Southeast Side lost residents.



Data Sources: U.S. Census 2020 PL 95-171 (Redistricting), prepared by the Chicago Metropolitan Agency for Planning; U.S. Census 2010 Summary File 1. The data are classified along 8 manual breaks and among the 77 officially recognized Community Areas. Variables are summarized to Chicago's Community Areas.



CHICAGO  
LOOP  
ALLIANCE.